

FDP Series - Double piston element

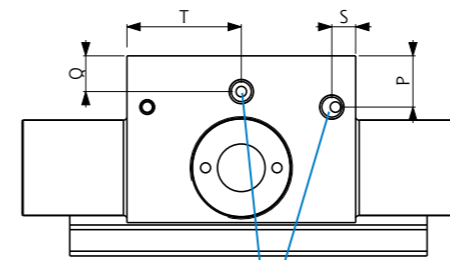
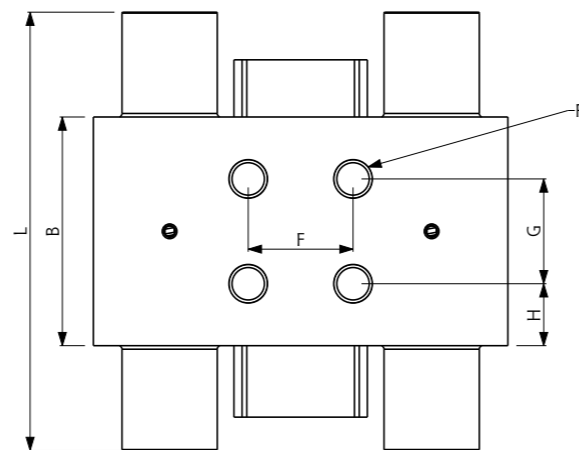
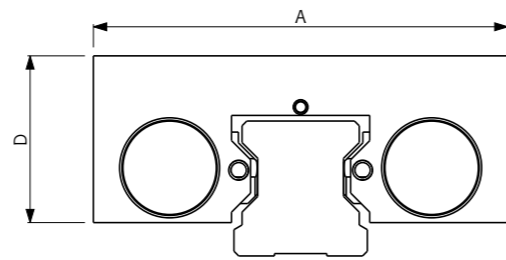
New line created to achieve a high clamping force in small spaces.
Dual Locking Action made by a pair of pistons for each tightening part.

FDP#--- S
FDP#--- E



Guide size **20 ÷ 45 mm**
Working type **Norm. Open**
Body **Steel**
Operating Temperature **-20°C ÷ +80°C**
Operating Pressure **5,5 ÷ 8 bar**
Switching time **40 ÷ 60 mSec**
Contact parts Hardness **60 ÷ 62 HRC**

- ◆ Double piston system: high clamping force.
- ◆ Small size.
- ◆ Short reaction time.
- ◆ Can be supplied complete with proximity sensor.



**M5
AIR CONNECTION**
we recommend
the use of compressed
air hose \varnothing 6x4

FDP#--- M
FDP#--- D



Guide size **20 ÷ 45 mm**
Working type **Norm. Closed**
Body **Steel**
Operating Temperature **-20°C ÷ +80°C**
Operating Pressure **5,5 ÷ 8 bar**
Switching time **40 ÷ 60 mSec**
Contact parts Hardness **60 ÷ 62 HRC**

- ◆ Clamping element without the use of energy.
- ◆ High clamping force thanks to the double piston system
- ◆ Small size.
- ◆ Short reaction time.
- ◆ Can be supplied complete with proximity sensor.

Type	Size	Holding Force [N]				A [mm]	B [mm]	D [mm]	F [mm]	G [mm]	H [mm]	L [mm]	P [mm]	Q [mm]	R	S [mm]	T [mm]
		M	S	E	D												
FDP	20 S	800	1300	1300	2100	70	51	27	20	27	12	89	7.5	5	M5x6	15	10
FDP	20 T	800	1300	1300	2100	73	51	25.5	20	27	12	89	5.5	5	M5x6	15	10
FDP	25 S	1200	2000	2000	3200	74	51	32.5	20	20	15.5	95	5.25	8.75	M6x7	25.5	5.5
FDP	25 T	1200	2000	2000	3200	78	51	30.5	20	20	15.5	95	5	6.5	M6x7	30.5	5.5
FDP	30 S	1200	2000	2000	3200	87	48	35	22	22	13	92	7.5	11	M8x10	24	5
FDP	30 T	1200	2000	2000	3200	89	48	33	22	22	13	92	6	9.5	M8x10	19.5	6
FDP	35 S	1500	2200	2200	3700	94	49	44	24	24	12.5	98	13	10	M8x15	14	19.5
FDP	35 T	1500	2200	2200	3700	100	49	36.5	24	24	12.5	98	7.5	5.25	M8x15	30.5	4.5
FDP	45 S	2000	3000	3000	5000	107.8	56	52	26	26	15	114	16.55	12.55	M10x17	28	4.5
FDP	45 T	2000	3000	3000	5000	120	56	43.5	26	26	15	114	13	9.5	M10x17	22	5